

## CHAPTER 6. DISASSEMBLING PROCEDURE

CAUTION: DISCONNECT THE UNIT FROM THE POWER SUPPLY BEFORE ANY SERVICING

### [1] INDOOR UNIT

1) Open the open panel.



2) Remove the screw fixing the cord clamp.



3) Remove the cord clamp.



4) Remove the unit-to-unit wiring from the terminal board.



5) Remove 2 air filters.



6) Remove 3 screw covers on front panel, push the bottom with minus driver and draw them out.



7) Remove 4 screws fixing the front panel.



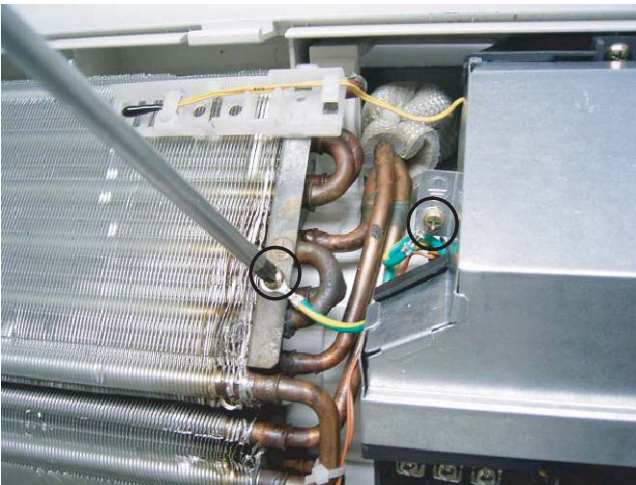
8) Release 3 hooks out from cabinet.



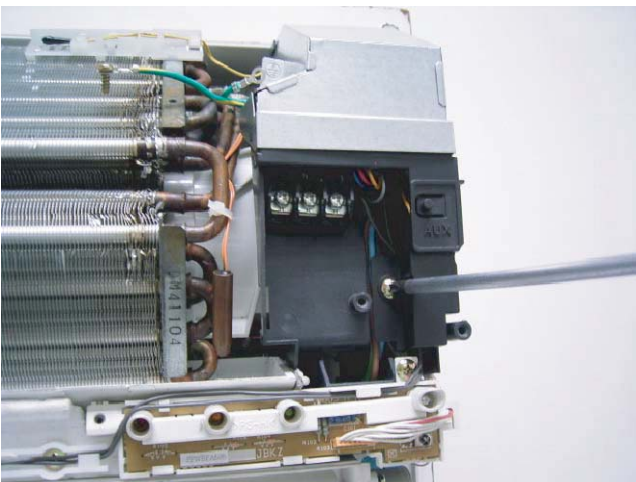
9) Take down the front panel.



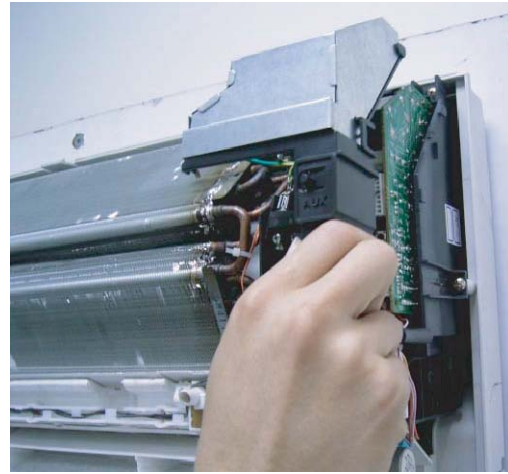
10) Remove 2 screws fixing the earth wire.



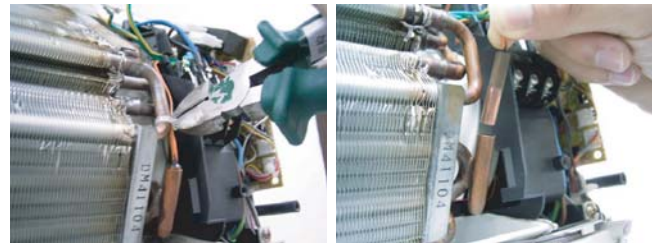
11) Remove a screw fixing the control box cover.



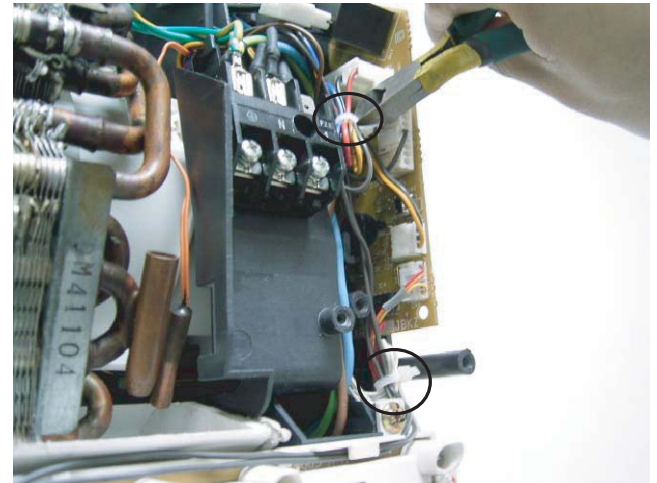
12) Remove the control box cover.



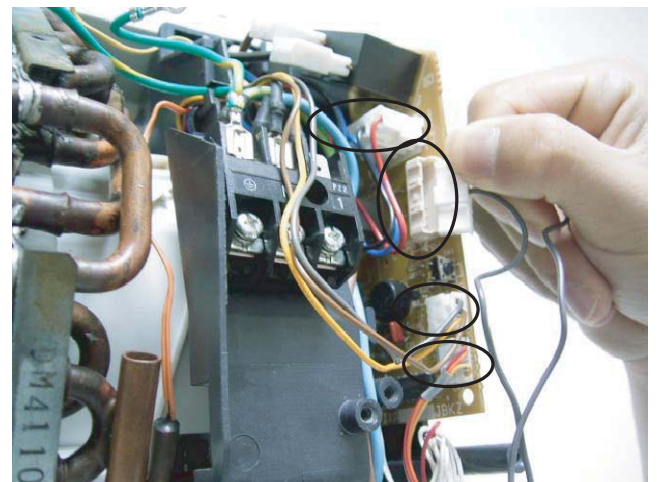
13) Cut the band and take out the sensor from sensor holder.



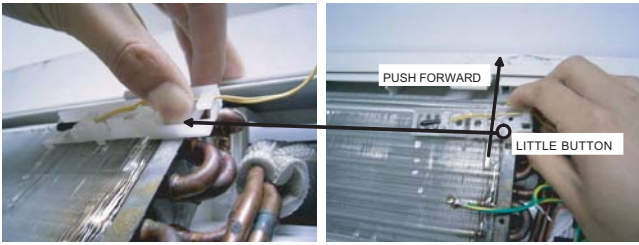
14) Cut the 2 bands fixing the wires.



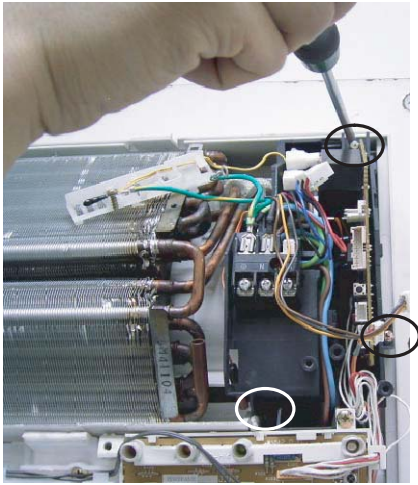
15) Remove 4 connectors.(CN1-CN4)



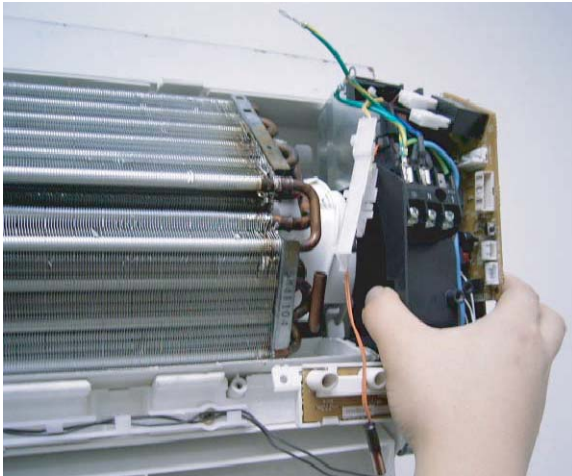
16) Remove the thermistor holder from the evaporator, push up the little button and then draw out.



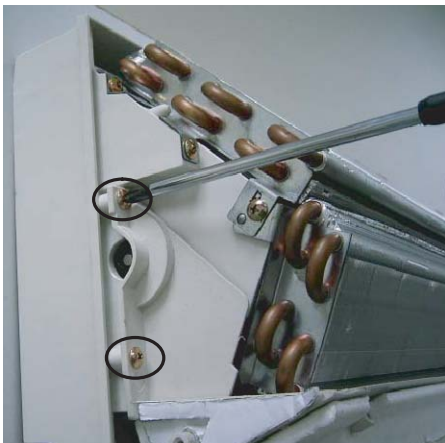
17) Remove 3 screws fixing the control box.



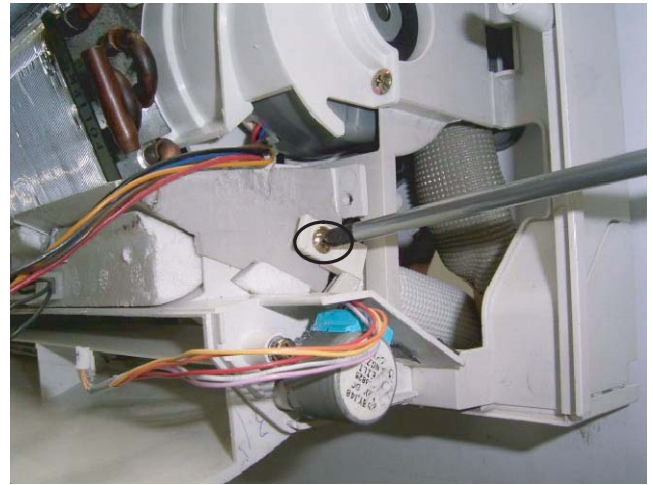
18) Take out the control box.



19) Remove 2 screws fixing drain pan.



20) Remove drain joint screw.



21) Release 4 hooks fixing drain pan.



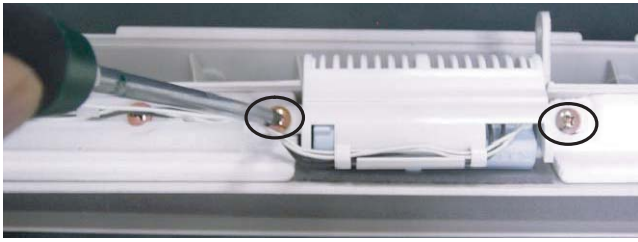
22) Take out the left side of the drain pan.



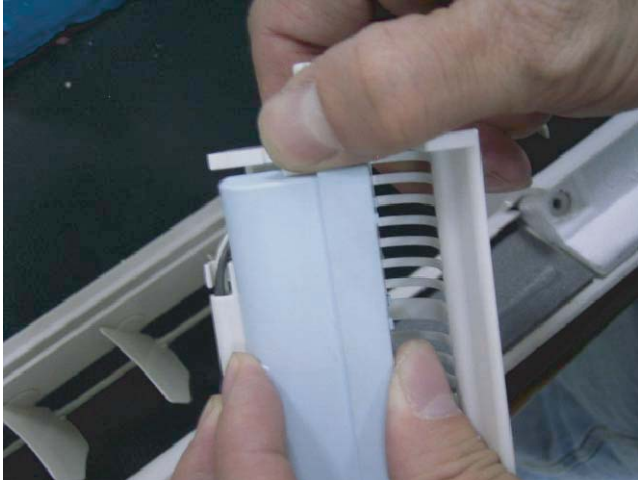
23) Take out the right side of the drain pan, leaving drain hose in cabinet.



24) Remove 2 screws fixing the cluster holder.



25) Release hooks of cluster holder and take out plasma cluster.



26) Remove the screw fixing cross flow fan.



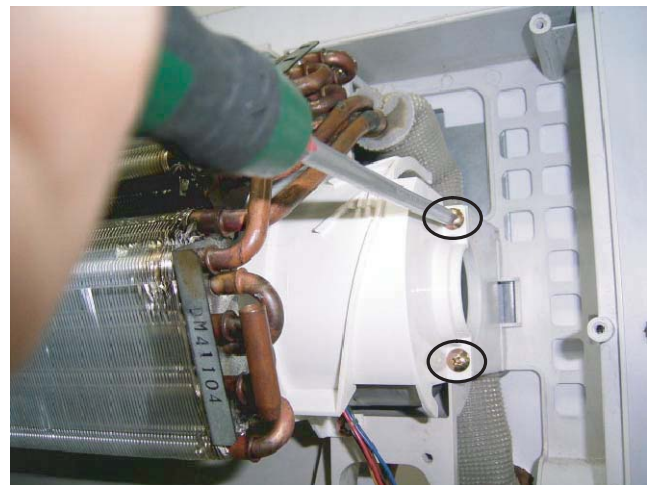
27) Remove 2 screws fixing the evaporator by the left side.



28) Hold up the left side of evaporator, pull out cross flow fan.



29) Remove 4 screws fixing motor cover.



30) By holding up the left side of evaporator, take out fan motor with cover.



## [2] OUTDOOR UNIT

1) Loose a screw fixing the side cover.



2) Loose 2 screws fixing the terminal cover and 1 screw fixing the cord clamp.

Remove terminal cover and cord clamp.



3) Loose the unit-to-unit cord.



4) Loose 6 screws fixing the top panel.

- Right side view



- Left side view



- Front view



- 5) Loose 5 screws fixing the front panel.

- Right side view



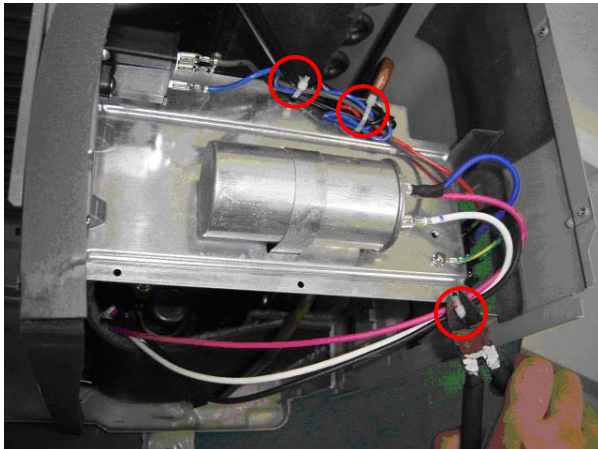
- Left side view



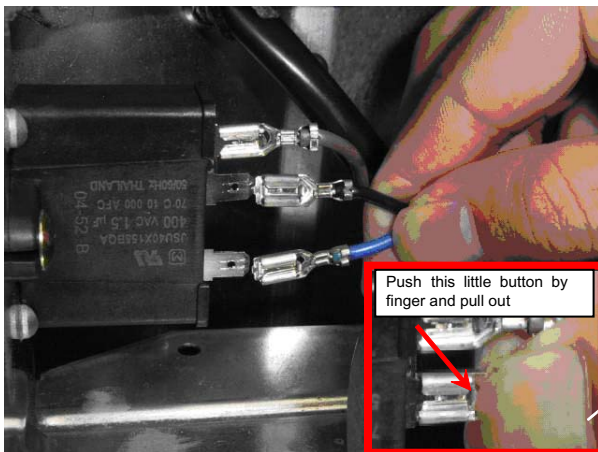
- Front view



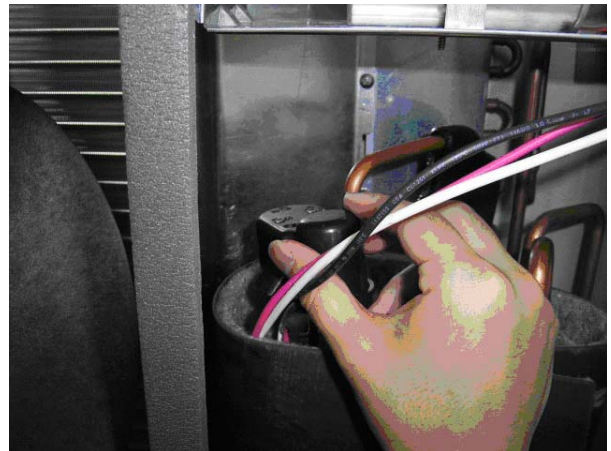
- 6) Cut 3 plastic bands.



- 7) Remove 2 terminals. (connecting with fan condenser)



- 8) Remove the terminal cover.



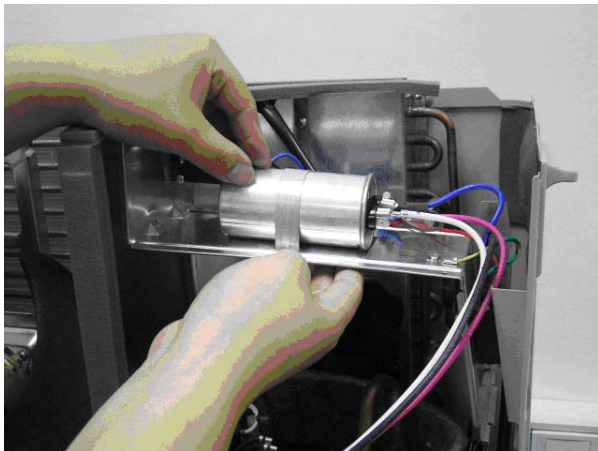
- 9) Remove 3 terminals of compressor.



- 10) Loose 4 screws fixing the control box.

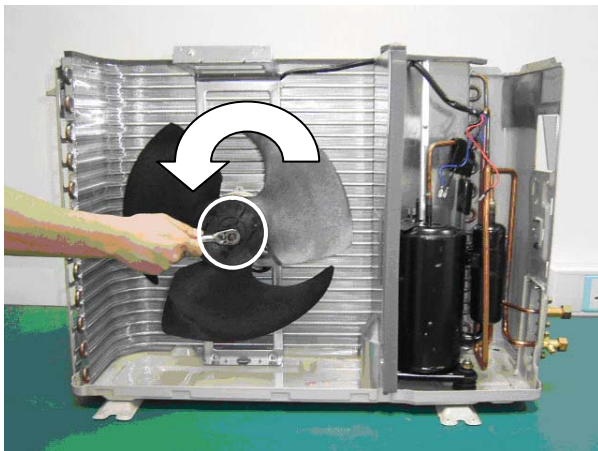


11) Take out the control box.



### 1. DISASSEMBLING PROCEDURE OF THE FAN

1) Loosen the fan nut and take out fan.



2) Loosen 4 screws fixing fan motor.



### 2. ASSEMBLING PROCEDURE OF COMPRESSOR COVER

- 1) Remove: Unlace the fastener and pull the compressor cover out from left side. [ a)→ b) ]
- 2) Assembly: Insert the compressor cover from left side, cover the tube and fasten. [ b)→ a) ]

