

[1] DISASSEMBLY OF INDOOR UNIT

Be sure to disconnect the power cord from the AC power outlet before starting the disassembly procedure. When reassembling the unit after repairing, be sure to install screws to their original positions.

The screws used are not the same in specifications such as corrosion-resistant treatment, tip shape and length.

After the air conditioner is repaired or parts are replaced, measure insulation resistance of the equipment using an insulation resistance meter. If the measured resistance is lower than 1 M Ω , inspect parts and repair or replace defective parts.

1) Open the Open panel.



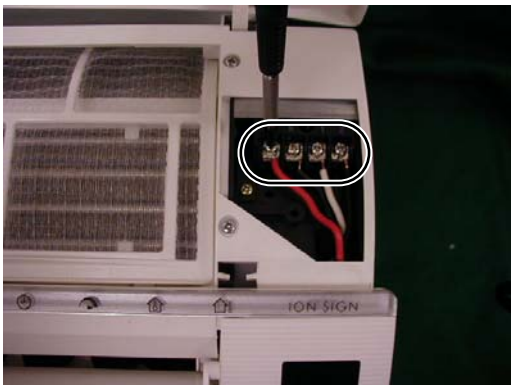
2) Remove the cord clamp fixing screw(1).



3) Remove the cord clamp.



4) Remove the unit-to-unit wiring from the terminal board(4).



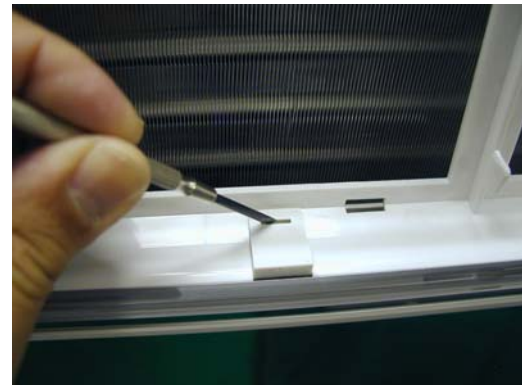
5) Pushing the 2 hooks, disconnect the louver base(2).



6) Remove 2 air filters.



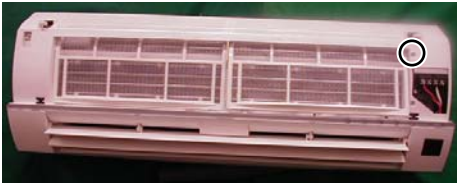
7) Remove the Screw cover (use the (-)driver).



8) Remove the cover.



9) Remove 5 screws fixing the front panel.



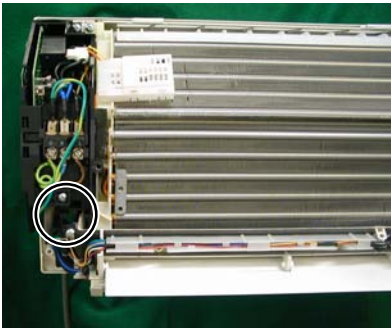
10) Pull the front panel up.



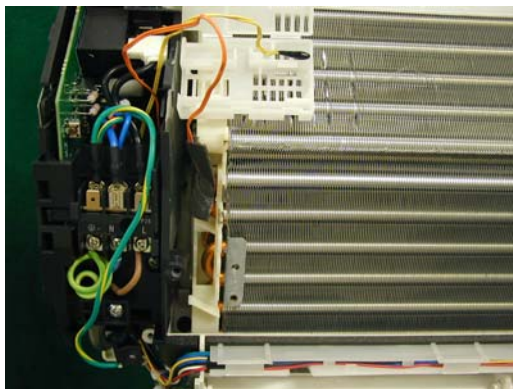
11) Remove a screw fixing the control box cover, and remove it.



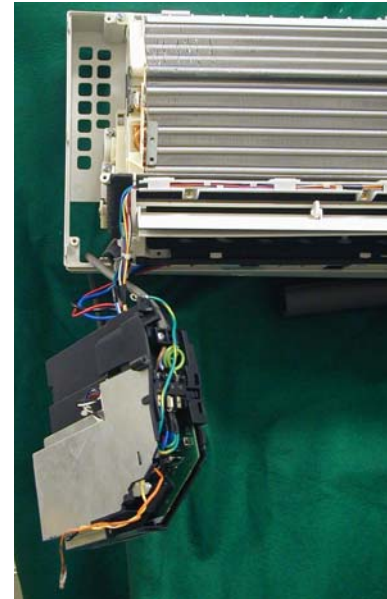
12) Remove the 2 screws fixing the control box.



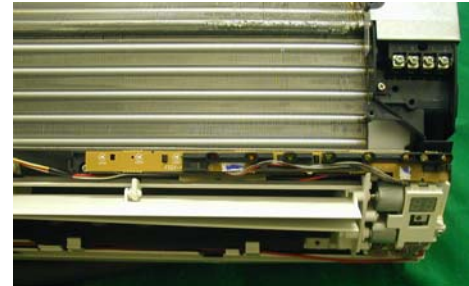
13) Disconnect the thermistor.



14) Remove the control box.



15) Remove the LED guide.



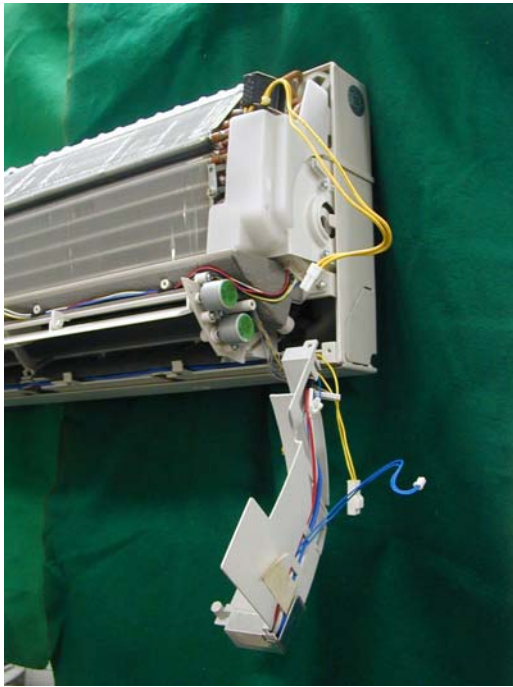
16) Pushing the 2 hooks of the holder, remove the display board.



17) Remove a screw fixing the holder.



18) Remove the holder.



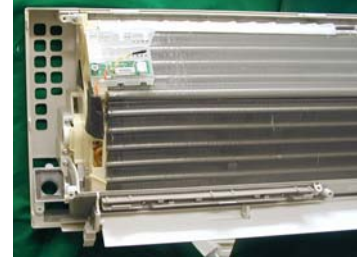
19) Remove 2 screws fixing the holder.



20) Remove the 2 screws fixing the PC cover.



21) Remove the screw fixing the drain pan assembly and evaporator.



22) Remove the drain guide.



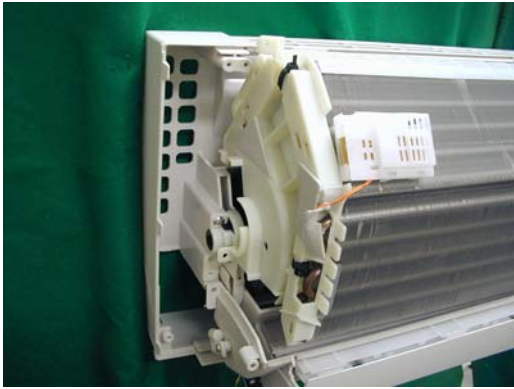
23) Remove the screw fixing the evaporator.



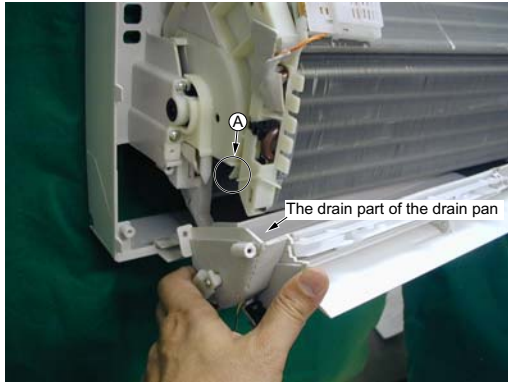
24) Remove the screw fixing the evaporator.



25) Pull the evaporator up.

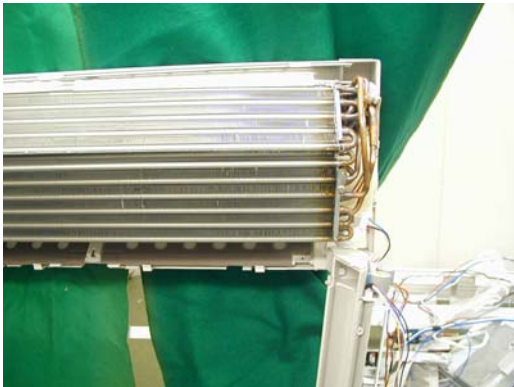


26) Take out the left side of the drain pan.



Attention: In case of assembly,
 Part A is inserted into the drain part of the drain pan.

27) Take out the right side of the drain pan leaving drain hose in cabinet.



28) Remove a screw (Front side).



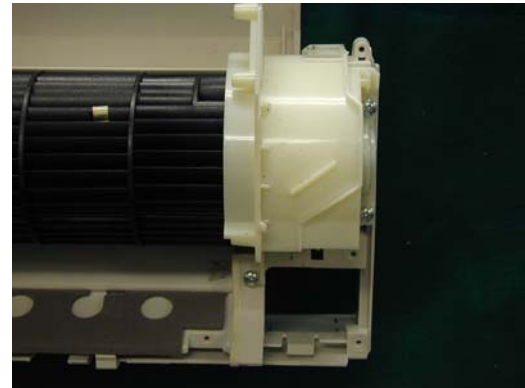
29) Remove the screw fixing cross flow fan.



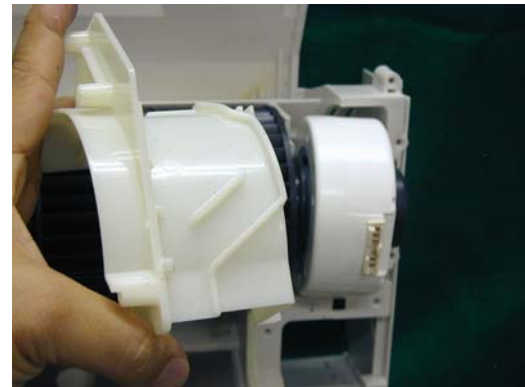
30) Hold up the left side of evaporator, pull out cross flow fan.



31) Remove the 3 screws fixing the motor cover.



32) Remove the motor cover.



AYAP12FHR
[2] OUTDOOR UNIT

1) Loose a screw fixing the side cover.



2) Loose 2 screws fixing the terminal cover and 1 screw fixing the cord clamp.

Remove terminal cover and cord clamp.



3) Loose the unit-to-unit cord.



4) Loose 6 screws fixing the top panel.

- Right side view



- Left side view



- Front view



- 5) Loose 5 screws fixing the front panel.

- Right side view



- Left side view

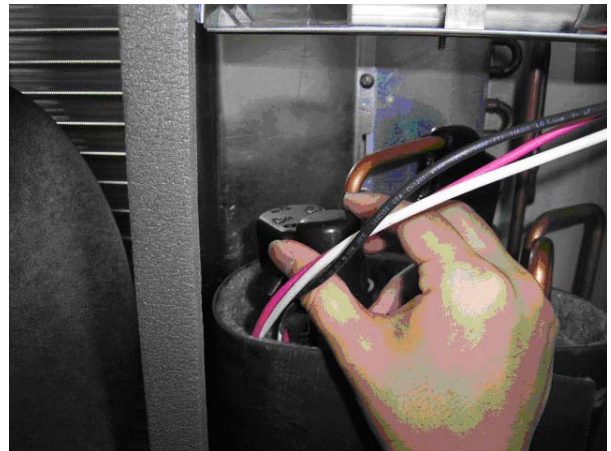


- Front view

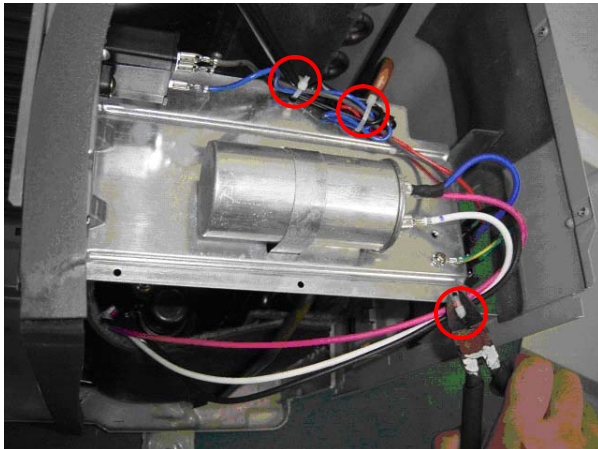


6) Cut 3 plastic bands.

- 8) Remove the terminal cover.



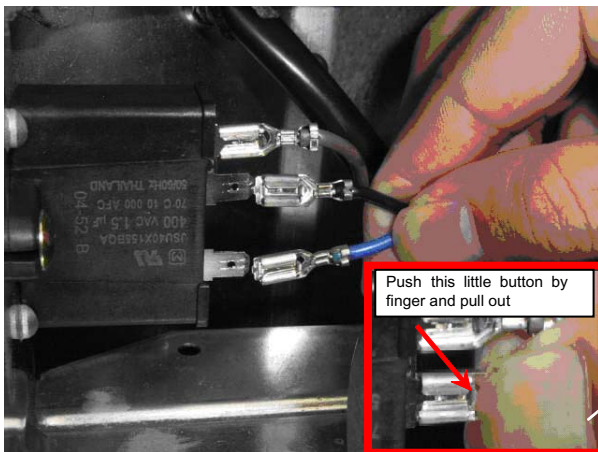
9) Remove 3 terminals of compressor.



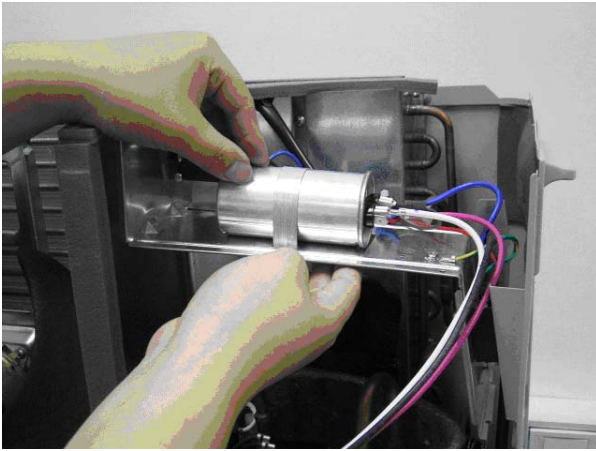
7) Remove 2 terminals. (connecting with fan condenser)



10) Loose 4 screws fixing the control box.

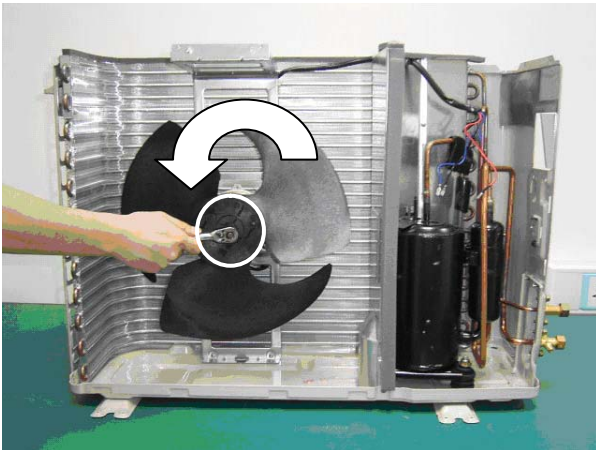


11) Take out the control box.



1. DISASSEMBLING PROCEDURE OF THE FAN

1) Loose the fan nut and take out fan.



2) Loose 4 screws fixing fan motor.



2. ASSEMBLING PROCEDURE OF COMPRESSOR COVER

- 1) Remove: Unlace the fastener and pull the compressor cover out from left side. [a)→ b)]
- 2) Assembly: Insert the compressor cover from left side, cover the tube and fasten. [b)→ a)]

